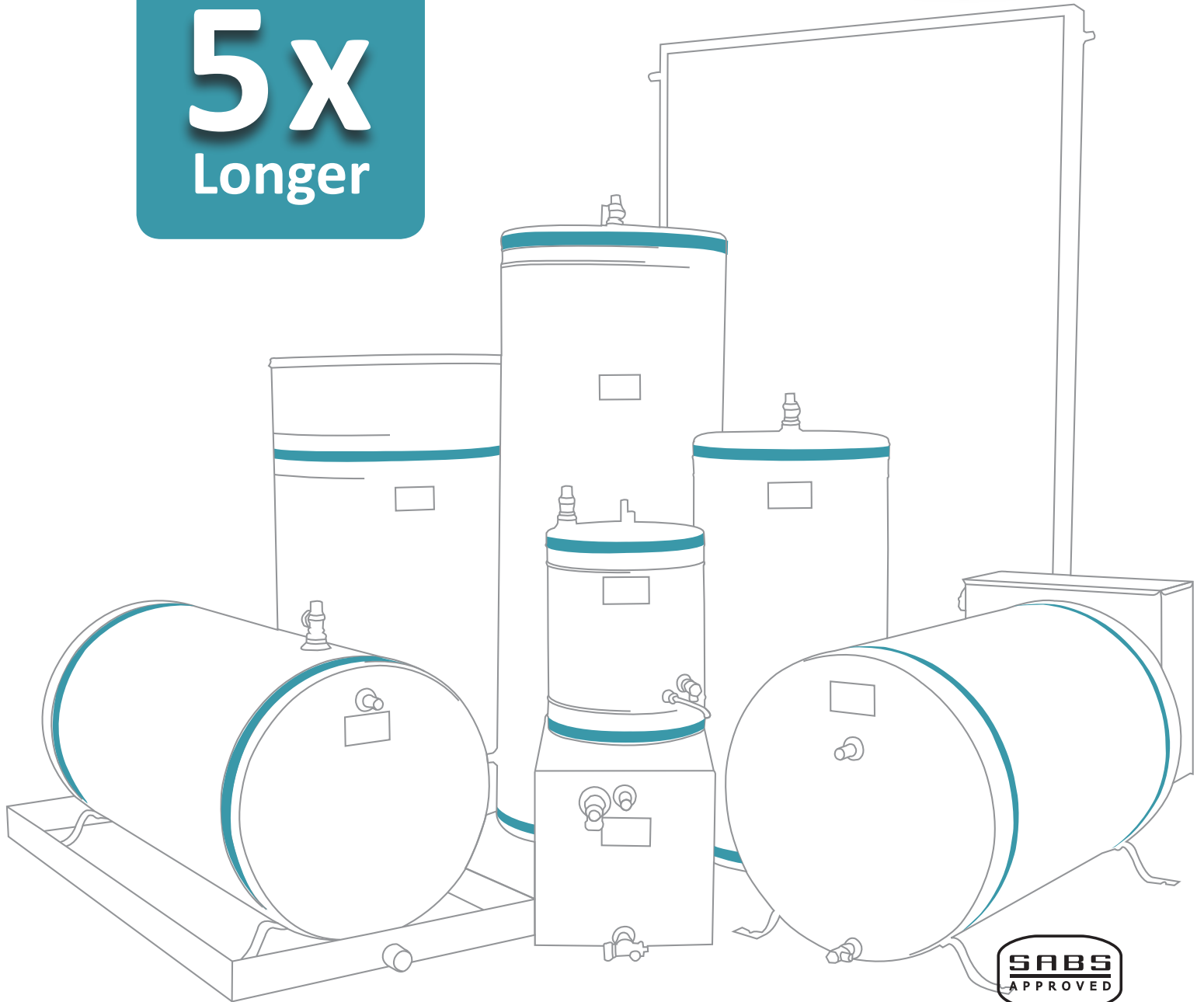


COPPER
Geysers
Last up to
5x
Longer



**SANS
151**

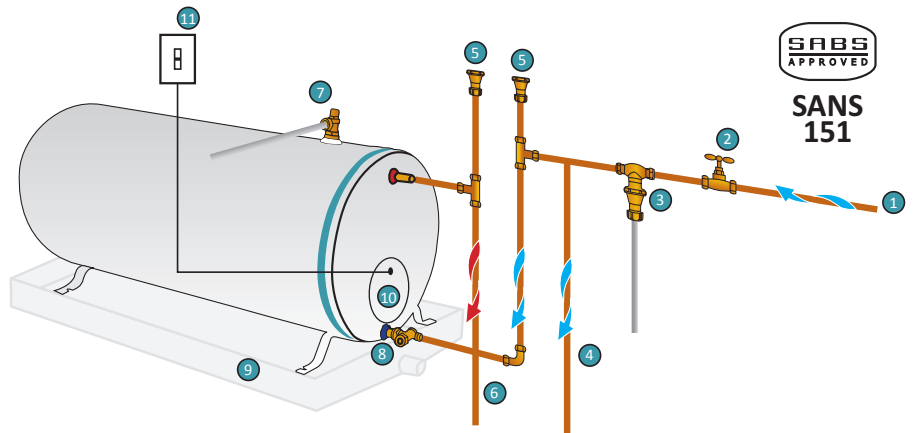
tecron
COPPER
WATER HEATING

Tel: 021 535 0137/8 • info@tecron.co.za • www.tecron.co.za

ABOUT US

Tecron Water Heating was established in 1997 due to the firm belief in the efficiency of copper hot water cylinders – because we like to manufacture products that'll last a lifetime. Copper remains the global material of choice for the manufacturing of hot water cylinders because it has proven its durability and reliability over decades. Copper geysers have proven to be the geyser with the longest lifespan, because copper is naturally corrosion resistant and is used in the natural form for the manufacturing of geysers. A copper geyser doesn't require periodic servicing, like anode replacements. This makes a copper geyser more cost effective over a long period of time. Copper is an environmentally friendly metal. It does not deteriorate and has the highest recycling rate of any engineering metal in the world. Copper kills bacteria, USA EPA has awarded copper antimicrobial status (www.antimicrobialcopper.org).

- Tecron Cylinders use standard SABS approved elements and thermostats – which are easy to find and replace if necessary
- All of our products have an aesthetically appealing baked enamel finish
- Tecron offers a comprehensive range of copper hot water cylinders to suit all water heating requirements
- Tecron products are locally manufactured
- Custom made cylinders and trays can be manufactured in accordance with customer specifications and requirements



HORIZONTAL ROUND GEYSERS

- 1 Municipal Water Supply
- 2 Isolating Valve
- 3 Pressure Reducing and Expansion Relief Valve
- 4 Balanced Cold Water Draw Off
- 5 Vacuum Breakers (minimum height of 300mm above Hot Water System)

- 6 Balanced Hot Water Draw Off
- 7 Temperature- and Pressure Safety Valve
- 8 Draincock
- 9 Drip Tray
- 10 Electrical Compartment
- 11 Isolator Switch



Local Production Of Various Copper Geysers

STANDARD GEYSERS

HORIZONTAL ROUND GEYSERS

50 ℓ, 100 ℓ, 150 ℓ, 200 ℓ & 250 ℓ

Copper Cylinders are capable of delivering hot water efficiently to multiple draw off points. The installation of copper cylinders is quick and easy, saving time and money. The product is lightweight, easy to handle and aesthetically pleasing.



MODEL	ELECTRIC LOADING	OPERATIONAL PRESSURE	DIAMETER x LENGTH
50 ℓ	2 kW	100 kPa & 200 kPa	450 x 610 mm
100 ℓ	2 kW	100 kPa, 200 kPa & 400 kPa	550 x 840 mm
150 ℓ	3 kW	100 kPa, 200 kPa & 400 kPa	550 x 1150 mm
200 ℓ	3 kW	100 kPa, 200 kPa & 400 kPa	550 x 1470 mm
250 ℓ	4 kW	100 kPa & 200 kPa	550 x 1875 mm

VERTICAL ROUND GEYSERS

50 ℓ, 100 ℓ, 150 ℓ, 200 ℓ & 250 ℓ

Available with the inlet and drain on either the left or right hand side of the casement. Should the installation space have any size or other constraints, these should be mentioned when the product is ordered.



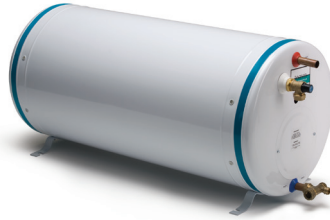
MODEL	ELECTRIC LOADING	OPERATIONAL PRESSURE	DIAMETER x LENGTH
50 ℓ	2 kW	100 kPa & 200 kPa	450 x 610 mm
100 ℓ	2 kW	100 kPa, 200 kPa & 400 kPa	550 x 840 mm
150 ℓ	3 kW	100 kPa, 200 kPa & 400 kPa	550 x 1150 mm
200 ℓ	3 kW	100 kPa, 200 kPa & 400 kPa	550 x 1470 mm
250 ℓ	4 kW	100 kPa & 200 kPa	550 x 1875 mm

SLIMLINE GEYSERS

HORIZONTAL SLIMLINE GEYSERS

50 ℓ, 75 ℓ, 100 ℓ & 150 ℓ

Slimline Water Heaters have a smaller footprint for easy installation in narrow spaces. For ease of use, all fittings are affixed to one end. These units are wall mountable.



MODEL	ELECTRIC LOADING	OPERATIONAL PRESSURE	DIAMETER x LENGTH
50 ℓ	2 kW	100 kPa & 200 kPa	450 x 610 mm
75 ℓ	2 kW	100 kPa & 200 kPa	450 x 790 mm
100 ℓ	2 kW	100 kPa & 200 kPa	450 x 980 mm
150 ℓ	3 kW	100 kPa & 200 kPa	450 x 1400 mm

VERTICAL SLIMLINE GEYSERS

50 ℓ, 75 ℓ, 100 ℓ & 150 ℓ

Available with the inlet and drain on either the left- or right hand side of the casing. Should the installation space have any size or other constraints, these should be mentioned when the product is ordered.



MODEL	ELECTRIC LOADING	OPERATIONAL PRESSURE	DIAMETER x LENGTH
50 ℓ	2 kW	100 kPa & 200 kPa	450 x 610 mm
75 ℓ	2 kW	100 kPa & 200 kPa	450 x 790 mm
100 ℓ	2 kW	100 kPa & 200 kPa	450 x 980 mm
150 ℓ	3 kW	100 kPa & 200 kPa	450 x 1400 mm

POINT OF USE

UNDER BASIN GEYSERS

15 ℓ

The Point-of-Use Water Heater is designed to supply hot water to a single fixture, usually installed in close proximity. The short distance between the geyser and fixture results in hot water being available almost instantaneously - this saves energy as the tap doesn't have to run before hot water is delivered.



MODEL	ELECTRIC LOADING	OPERATIONAL PRESSURE	DIAMETER x LENGTH
15 ℓ	1.5 kW	200 kPa	355 x 440 mm

HORIZONTAL SQUARE GEYSERS

25 ℓ



MODEL	ELECTRIC LOADING	OPERATIONAL PRESSURE	DIAMETER x LENGTH
25 ℓ	2 kW	100 kPa	355 x 355 x 560 mm

SQUARE GEYSERS

HORIZONTAL SQUARE GEYSERS

25 ℓ, 100 ℓ, 150 ℓ & 200 ℓ

The Square Water Heater is a box style water heater for easy installation in narrow spaces, cupboards etc. For ease of use, all fittings are positioned on one end. These units are wall mountable with square angle brackets, which are supplied separately.



MODEL	ELECTRIC LOADING	OPERATIONAL PRESSURE	DIAMETER x LENGTH
25 ℓ	2 kW	100 kPa	355 x 355 x 560 mm
100 ℓ	2 kW	100 kPa & 200 kPa	550 x 550 x 840 mm
150 ℓ	3 kW	100 kPa & 200 kPa	550 x 550 x 1150 mm
200 ℓ	3 kW	100 kPa & 200 kPa	550 x 550 x 1470 mm

INDUSTRIAL GEYSERS

VERTICAL/ HORIZONTAL INDUSTRIAL COPPER GEYSERS

400 ℓ, 450 ℓ & 500 ℓ



BULK STORAGE WATER HEATERS

Tecron specialises in the design and supply of bulk storage hot water systems. These systems are designed in accordance with customer requirements and specifications. Storage volumes from 450 ℓ to 20 000 ℓ can be supplied, as well as in-line heaters and a complete range of industrial water heating spares.

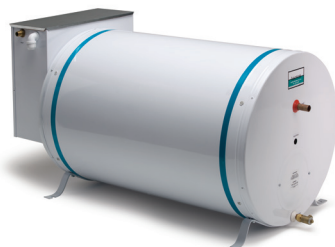
MODEL	ELECTRIC LOADING	OPERATIONAL PRESSURE	DIAMETER x LENGTH
400 ℓ	6, 9 or 12 kW	200 kPa	750 x 1500 mm
450 ℓ	6, 9 or 12 kW	200 kPa	750 x 1810 mm
550 ℓ	6, 9 or 12 kW	200 kPa	750 x 2150 mm

COMBINATION GEYSERS

HORIZONTAL COMBINATION GEYSERS

100 ℓ, 150 ℓ & 200 ℓ

Combination Water Heaters are ideally suited to applications where water is delivered unmixed via single loose standing taps. Installation is easy and cost effective as no pressure reducing valves and vacuum breakers are required.



MODEL	ELECTRIC LOADING	OPERATIONAL PRESSURE	DIAMETER x LENGTH
100 ℓ	2 kW	0 kPa	600 x 900 mm
150 ℓ	3 kW	0 kPa	600 x 1160 mm
200 ℓ	3 kW	0 kPa	600 x 1695 mm

VERTICAL COMBINATION GEYSERS

50 ℓ, 100 ℓ, 150 ℓ & 200 ℓ

Both horizontal and vertical combination cylinders are available with the inlet and overflow positioned on either the left- or right hand side of the product. Should the installation have any size or other constraints, these should be mentioned when the product is ordered.



MODEL	ELECTRIC LOADING	OPERATIONAL PRESSURE	DIAMETER x LENGTH
50 ℓ	2 kW	0 kPa	455 x 810 mm
100 ℓ	2 kW	0 kPa	600 x 930 mm
150 ℓ	3 kW	0 kPa	600 x 1150 mm
200 ℓ	3 kW	0 kPa	600 x 1400 mm

SOLAR GEYSERS

INTERNAL/EXTERNAL HORIZONTAL SOLAR GEYSERS

100 ℓ, 150 ℓ, 200 ℓ, 250 ℓ & 300 ℓ

We offer eco-wise water heating through our complete range of solar water heating systems and panels. Solar water heating is economically and environmentally friendly - it uses natural energy, thus saving electricity.



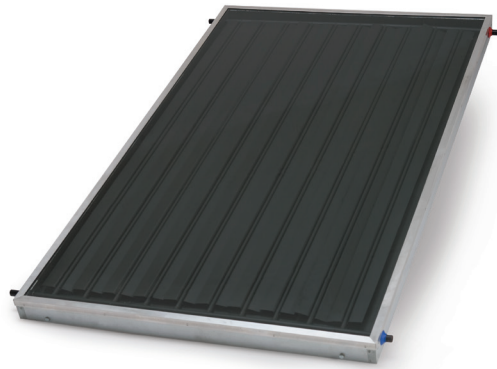
Colours Available:



MODEL	ELECTRIC LOADING	OPERATIONAL PRESSURE	DIAMETER x LENGTH
100 ℓ	2 kW	100 kPa, 200 kPa & 400 kPa	550 x 840 mm
150 ℓ	3 kW	100 kPa, 200 kPa & 400 kPa	550 x 1150 mm
200 ℓ	3 kW	100 kPa, 200 kPa & 400 kPa	550 x 1470 mm
250 ℓ	4 kW	100 kPa & 200 kPa	550 x 1875 mm

SOLAR COLLECTOR PANELS

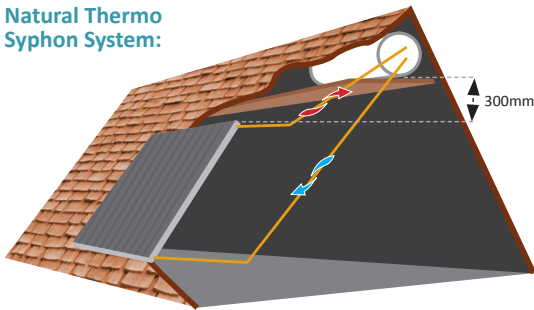
100 ℓ, 150 ℓ & 200 ℓ



MODEL	WIDTH	LENGTH	APERTURE AREA	OPERATIONAL PRESSURE
Panel for 100 ℓ Geyser	850 mm	1980 mm	1.7 m ²	400 kPa
Panel for 150 ℓ Geyser	1150 mm	1980 mm	2.3 m ²	400 kPa
Panel for 200 ℓ Geyser	1450 mm	1980 mm	2.9 m ²	400 kPa

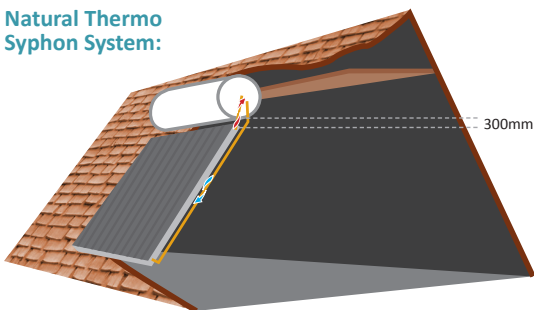
SOLAR INSTALLATION OPTIONS

Natural Thermo Syphon System:



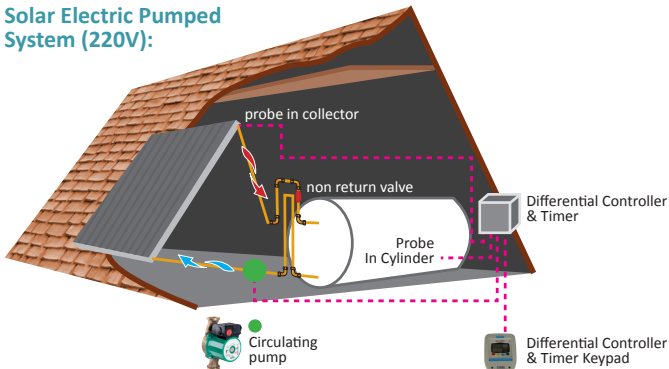
Geyser to be mounted inside roof-space with a minimum of 300 mm between the geyser & panel.

Natural Thermo Syphon System:



Geyser to be mounted outside on roof with a minimum of 300 mm between the geyser & panel.

Solar Electric Pumped System (220V):



Geyser to be mounted inside roof-space together with a 220 V circulating pump & differential controller or a 12 V Photovoltaic panel and 12 V circulating pump.

SPARES, PARTS AND ACCESSORIES



Immersion Element
- Standard & Hard Water



Spiral Element
- Standard & Hard Water



"Xtreme" Element
- Standard & Hard Water



VKF 11 & VKF7 Thermostats



TSE Type Thermostat (Kwiktherm)



Safety Valve
Adapters

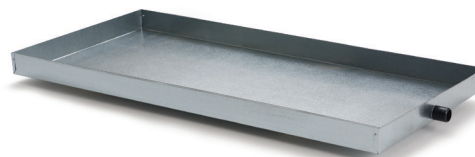


Geyserwise Digital Controller



220 V Bronze
Circulating Pump

DRIP TRAYS



CUSTOM SIZES CAN BE
MANUFACTURED

MODEL	CODE	LENGTH x WIDTH
Vertical Tray	TTVERT	655 x 655 mm
100 ℓ Tray	TT100	1100 x 650 mm
150 ℓ Tray	TT150	1370 x 650 mm
200 ℓ Tray	TT200	1680 x 650 mm
250 ℓ Tray	TT250	1980 x 650 mm